

When to Leverage HMIS Data for Health and Homeless Use Cases: Aspirations and Efforts from Three All In Communities



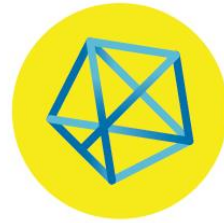
Chris Jioras
North Coast Health
Improvement and
Information Network
(NCHIIN)

John Mazzelo
Human Services
Coalition of Tompkins
County

Padma Thangaraj
All Chicago

Peter Eckart
Illinois Public Health
Institute

ALL IN



DATA FOR
COMMUNITY
HEALTH

When to leverage HMIS data for health and homeless use cases: aspirations and efforts from three All In communities

The CIE Summit, Wednesday, April 24



Speakers



Chris Jioras
IT Director, NCHIIN



John Mazello
Director of Community
Services, Human
Services Coalition of
Tompkins County



Padma Thangaraj
All Chicago Making
Homelessness History



Peter Eckart
Co-Director, DASH
Illinois Public Health
Institute

Session Description

This session will provide a deeper look at the *All In: Data for Community Health* peer learning network and demonstrate how to access lessons learned, tools, and resources from communities across the country. *All In* is a network and an online community where anyone working on multi-sector data sharing can come to share and learn, with a special emphasis on capacity building of community collaborations. In this session, hear from three communities about their efforts to date – from just getting started by assessing local capacity and goals to matching HMIS data with healthcare data – and how they leveraged DASH and *All In* and to advance their efforts. These communities are interested in exploring how HMIS and other related data systems can be used by healthcare and social service agencies to improve care coordination, prioritization of housing, and other supportive services.

What we talk about when we talk about multi-sector data



Two Broad Aims for Data Sharing



Whole Person Systems of Care



Place-based System, Policy, and Environmental Change

ALL IN



Current Program Partners

Past Partners



BUILD
Health
Challenge



Data Across
Sectors for
Health



Network for
Public Health
Law



New Jersey
Health
Initiatives



Public Health
National
Center for
Innovations



Population
Health
Innovation
Lab



Community
Health Peer
Learning
Program



Connecting
Communities
and Care

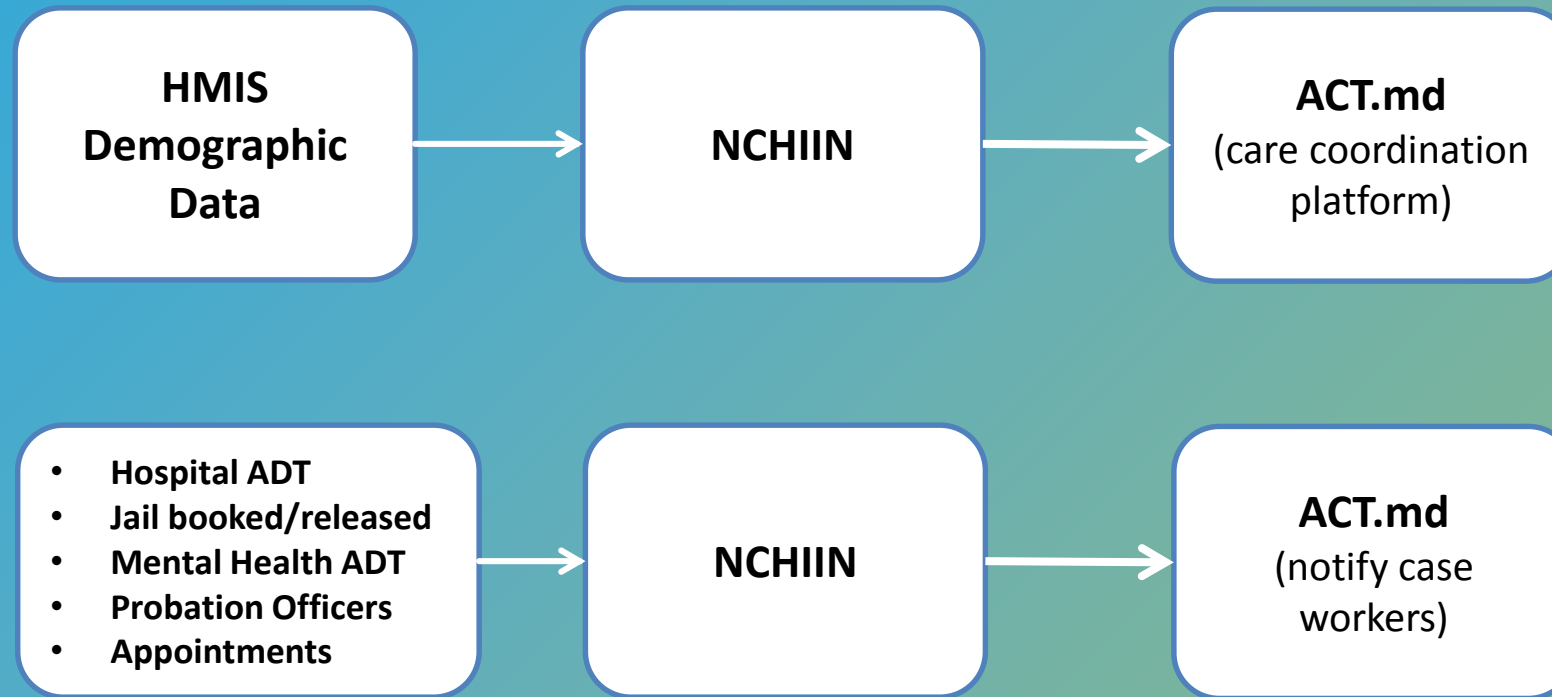


North Coast Health Improvement and Information Network

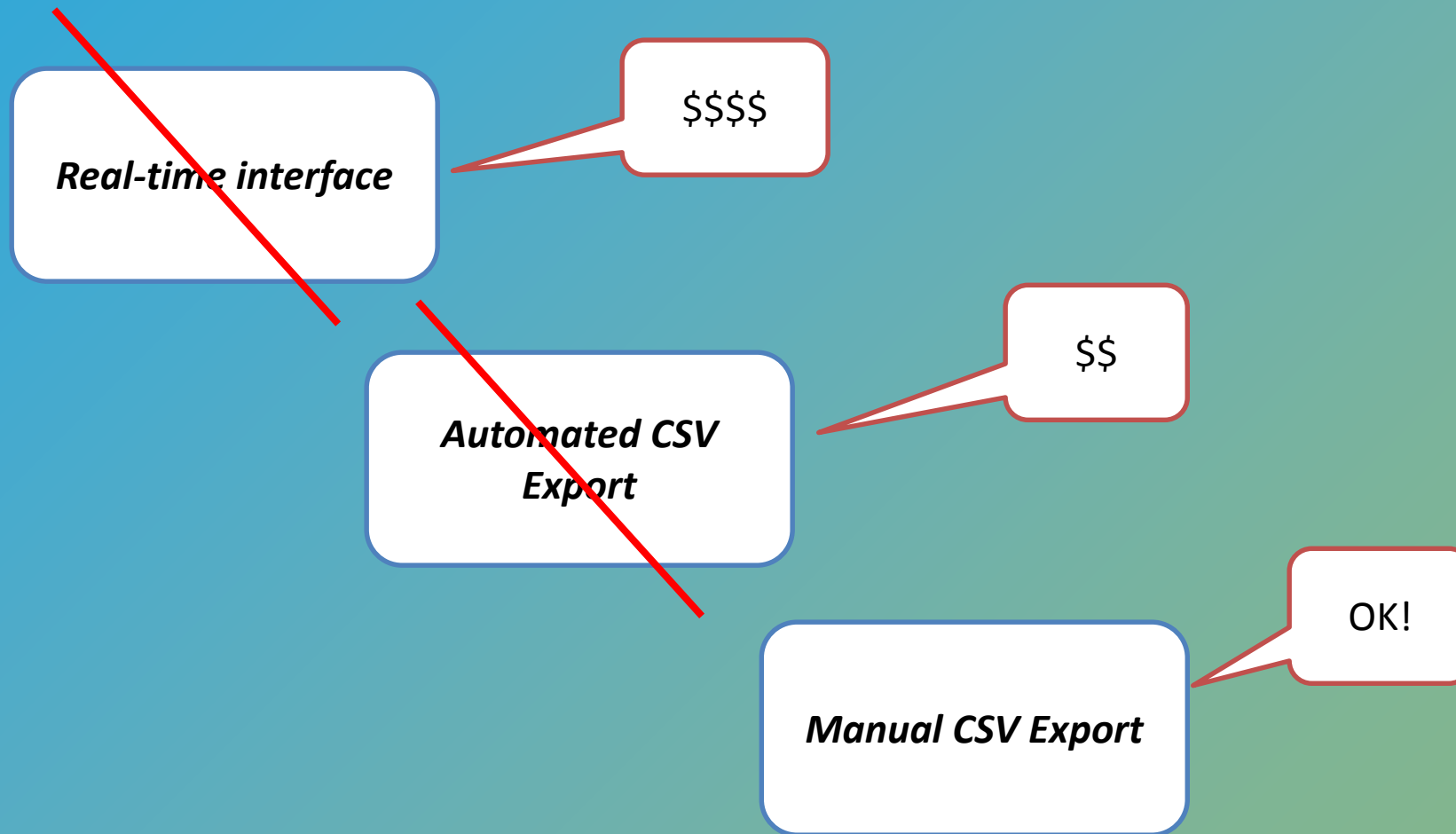
- Humboldt and Del Norte Counties, CA
- Population of 163k
- Started in 2010 under a grant from Cal eConnect and other partners
- Project with County of Humboldt Homeless Services started in 2016



What We Wanted To Do...



The evolution of getting data from HMIS



Issues with HMIS data

- Trying to use one system's data to populate another system that needs data for a different purpose is fraught
- Data entry errors – data integrity for reporting is different than integrity needed for patient matching

Other data issues

- Homeless population can sometimes be poor historians of their own identity data (date of birth, ssn)
- Homeless population have no consistent address or phone number
- Other data sources are also spotty for some identity matching elements in some cases. For example, jail booking reports have a DOB, but released reports do not.
- All of this together means possible false positives, but MANY false negatives.

The Future



HMIS

Avatar
(County EHR)

- **Positive:** EHR needs good identity data to get paid by insurance companies (including Medi-Cal) for services rendered.
- **Negative:** Not all homeless clients are included in EHR



BUILDING COMMUNITY DATA CAPACITY THROUGH A CONTINUUM OF CARE

A DEVELOPING INITIATIVE IN TOMPKINS COUNTY, NY



"Ithaca Commons (New York)" by Kenneth C. Zirkel is licensed under CC BY 3.0 (creativecommons.org/licenses/by-sa/3.0/)

ITHACA & TOMPKINS COUNTY, NY

Population 104,415 (ACS 2017)

28,774 in College or Graduate School

Relatively Service Rich Compared to Neighbors

"Top 100 Places to Live" but...

Top Cost-Burdened Renter Share in the County (Harvard JCHS)

Small Urban Area vs. Large Rural Landscape

"Power Station and Upper Falls Ithaca Falls and gorge" by bobistraveling is licensed under CC BY 2.0 (creativecommons.org/licenses/by/2.0/)

NEW YORK STATE & REGIONALLY

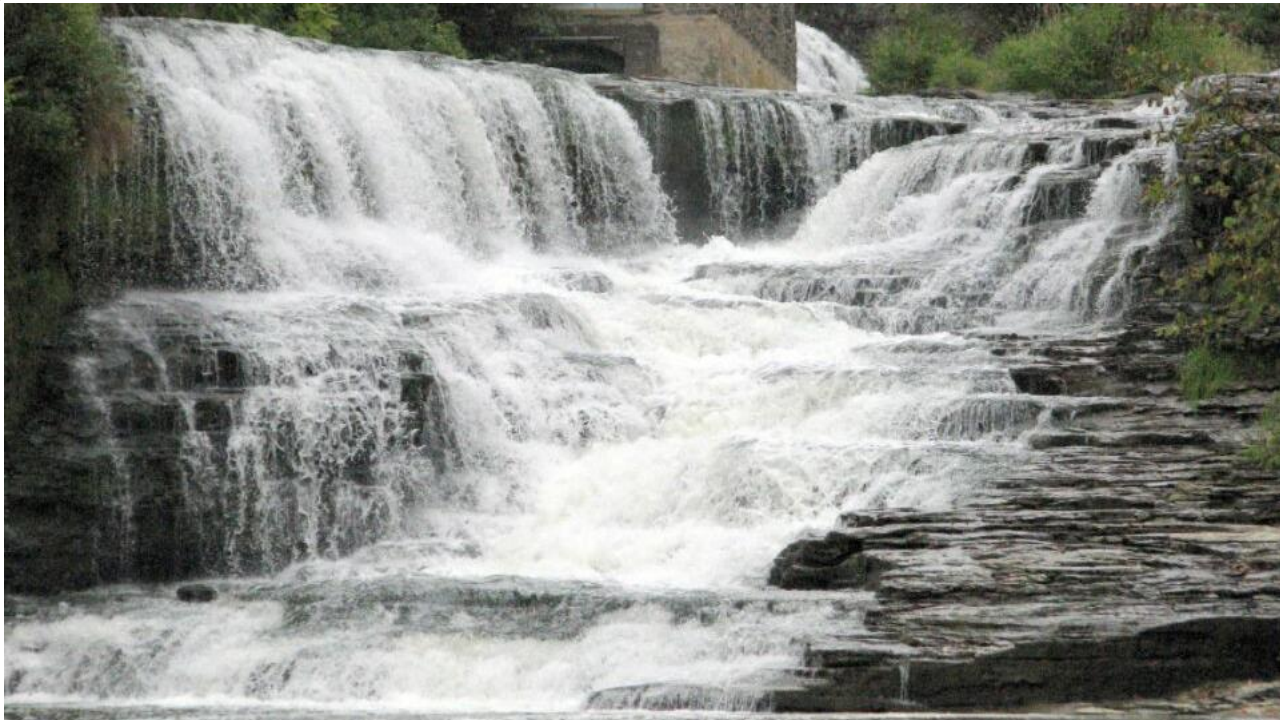
"Surrounded by Reality"

Regionalization of Statewide Programs - Not Based Here

Delivery System Reform Incentive Payment & Other Reforms

Value-Based Payment Roadmap

Fragmentation Now, Consolidation Later?



Project Background and Goals

Intersecting Initiatives

Population Health Improvement, Collective Impact, DSRIP, 2-1-1, Continuum of Care, Care Management

Goals

Build experience and capacity in data sharing/collaboration
Provide a replicable test case for other partnerships
Explore care management led by human services providers
Better understand what we are doing and how it is working

Opportunities and Challenges

- Already-integrated network
- Programs are used to working together on initiatives
- Access to funding streams and support/consulting now
- Organizational planning and coordination expertise
- Connections to All In and 2-1-1 San Diego Mentorship

Opportunities and Challenges

- Already-integrated network
- Programs are used to working together on initiatives
- Access to funding streams and support/consulting now
- Organizational planning and coordination expertise
- Connections to All In and 2-1-1 San Diego Mentorship
- Limited capacity of all partners
- Hesitance from funders/vendors to try new things
- New roles: data management, compliance, liability?
- Integrating disparate goals
- Sustainability or preparing for Version 2.0?
- Trust

All Chicago

All Chicago's mission is to unite our community and resources to provide solutions that ensure and sustain the stability of home.

Vision for an Integrated Health and Human Services Data System

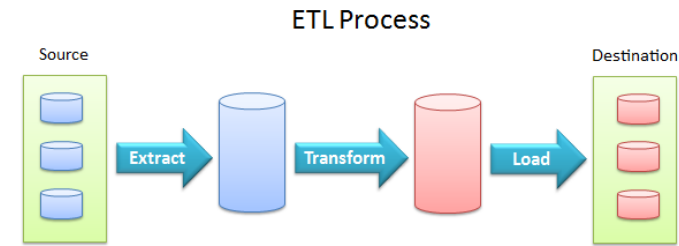
Achievements/Progress to Date

Since 2016, the following grants helped All Chicago define this vision:

- Academy Health: Community Health Peer Learning Program – Community Action Plan
- DASH CIC START: WellCare and Chicago Housing Authority
- Chicago Community Trust: CAPriCORN
- Pritzker: Road Map Initiative

What we have achieved through these pilots:

- An internal prototype: SQL DB with HMIS dataset



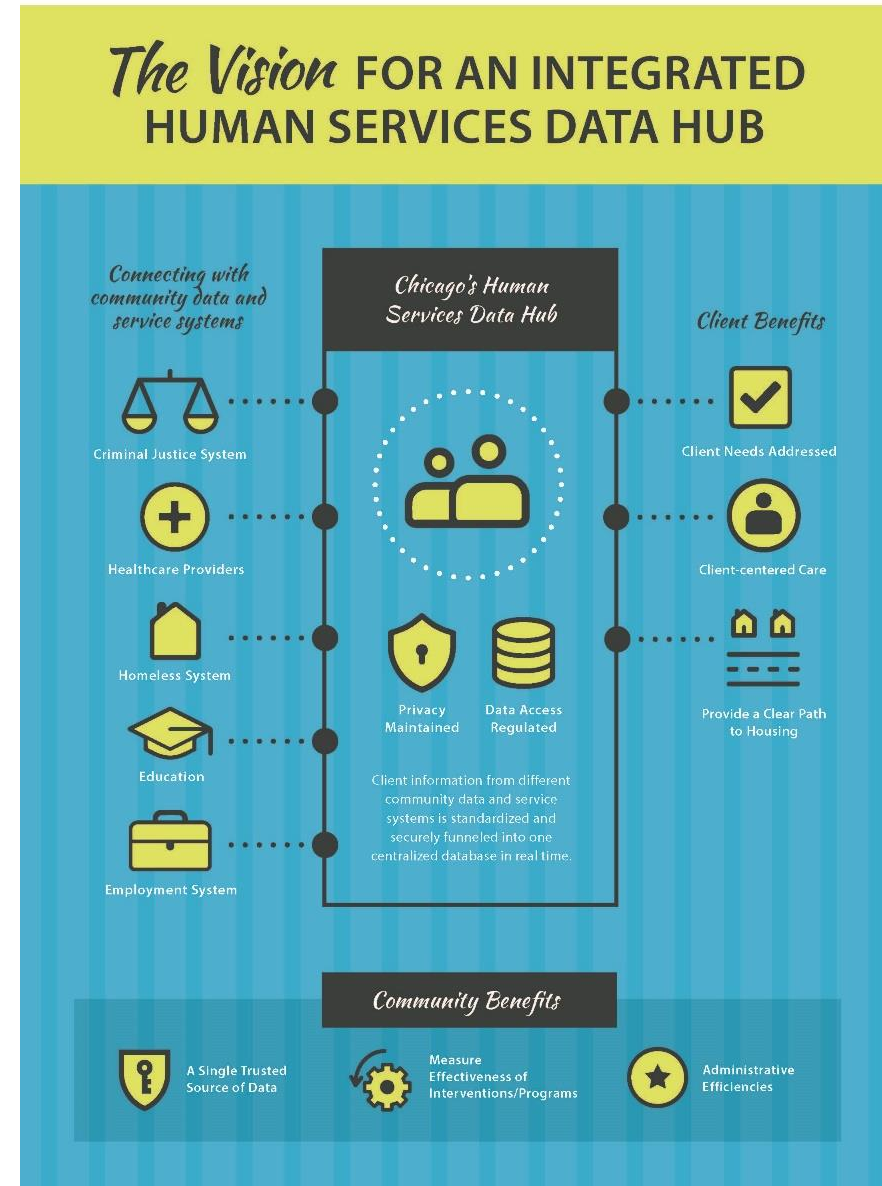
Integrated Data Hub

Time Frame

Approximately three years

Approach

- Phase 1: Build a platform
- Phase 2: Extend the platform
- Phase 3: Leverage the platform



All In Online Community

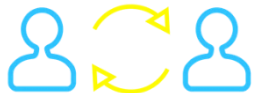
allin.healthdoers.org



Continue the conversation



Access resources



Connect with peers



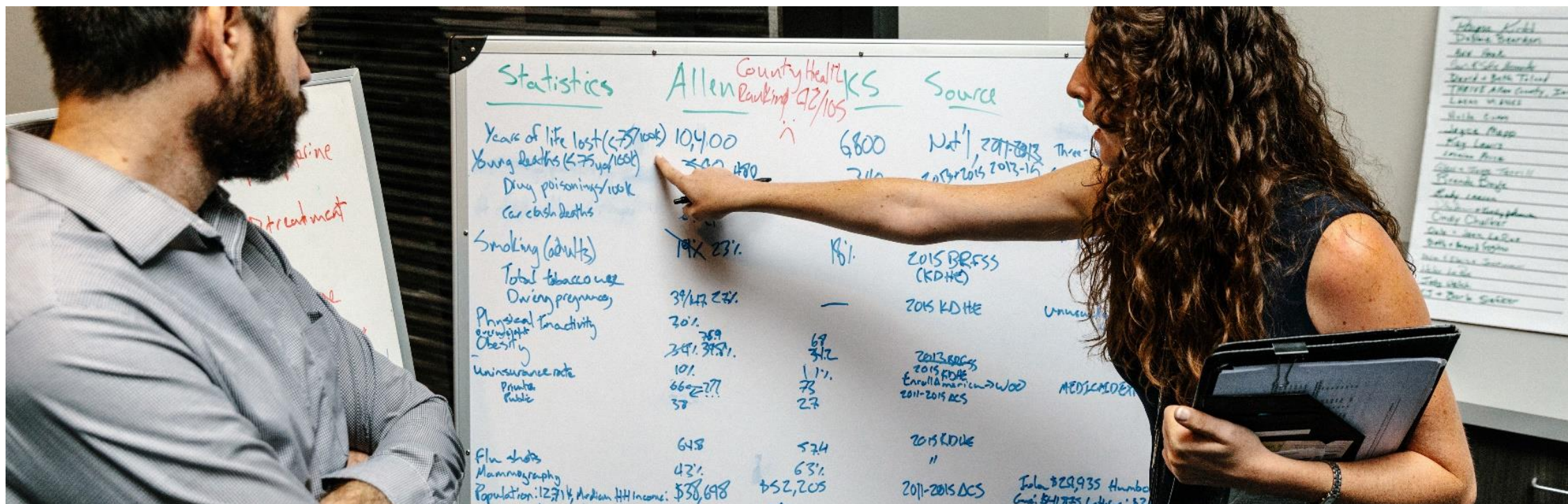
Events calendar

Tips to get started:

- » Complete your individual member profile
- » Contact info@allindata.org to add a project profile or create your own
- » Attend an *All In Office Hours* session for an in-depth tour



Questions?



Thank You!