

# Yes We Can and We Are: Using Research to Advance Policy and Practice



Regan Foust, PhD  
The Children's Data  
Network at USC

Lisa Goldman-Rosas  
Stanford University  
School of Medicine

Ginger Zelinski  
Benefits Data Trust

Pierre-Gerlier Forest, PhD  
School of Public Policy,  
University of Calgary



# Activating communities to generate and utilize data to affect policy change for improved health and well being

**Lisa Goldman Rosas, PhD MPH**

Assistant Professor

Director, Office of Community Engagement

Associate Director, Our Voice Global Citizen Science Research Network

Stanford School of Medicine

2<sup>nd</sup> Annual Community Information Exchange Summit

April 25, 2019



An **under-utilized renewable resource** on the planet to promote human & planetary wellness . . .



**are residents themselves!**  
(through community-engaged citizen science)





# The “**OUR VOICE**” Citizen Science Research Initiative

Empowers residents to assess & advocate for healthier neighborhoods & communities (with local decision-makers)

**Facilitators** of this process can be researchers, community organizations, govt. groups, or local opinion leaders or residents themselves





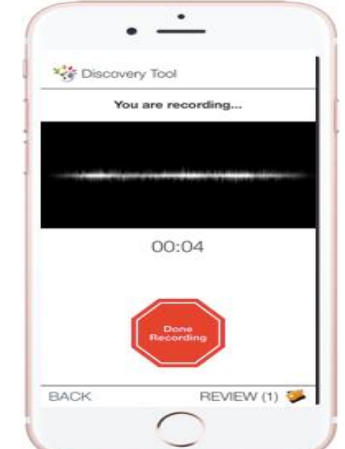


# It starts with an easy-to-use mobile app: **Stanford Healthy Neighborhood Discovery Tool**

Buman et al. Am J Prev Med, 2013



- Used by residents, *irrespective of ‘tech literacy’ or language*, to assess community features that *promote or hinder* healthy living or daily well-being
- Tool used to collect neighborhood info via **GPS Route tracking/ Geo-coded Photos & Audio narratives**; as few as 8-10 residents needed to get “saturation” around top barriers & enablers of healthy living





## Next, in a facilitated process, Residents:

- **share** their photos & “stories” collected on their walks with other residents
- **build consensus** around high-priority yet realistic areas for change
- share their data with **key decision makers** & develop possible solutions
- **formulate action steps** to activate local changes (e.g., a safe, age-friendly walking route for Israeli seniors, with support of local businesses)





# The Discovery Tool Data Portal

- Facilitators log in to secure data base with unique IDs
- Allows for facilitators to view and process Discovery Tool data
  - Auto-transcription of narratives; combined walk maps; facial blurring
- Data returned to citizen scientists for analysis and interpretation

Photo Previews

@7:20 am @7:21 am @7:24 am @7:25 am @7:28 am @7:30 am

Map Satellite

Map data ©2018 Google Terms of Use Report a map error

Map data ©2017 Google Terms of Use Report a map error

Good or Bad for the community

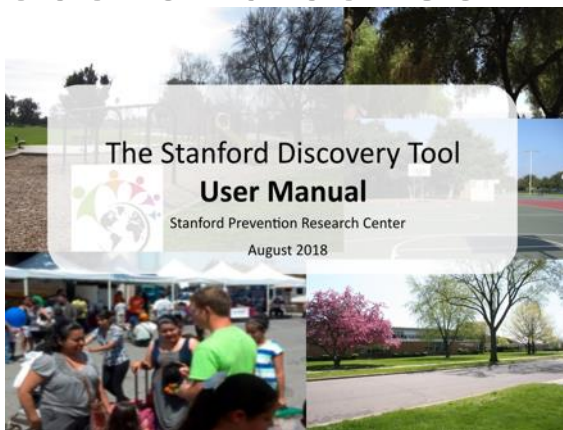
I took the photo because as you can see from the left of the picture, there is a sidewalk, and then we have a crosswalk going across the street, but it leads to a ditch. So that needs to be fixed. There needs to be an extension of the sidewalk to the sidewalk on the side there to the right.





# Our Voice Toolkit

- A library of evaluation measures to facilitate and track impact
- Customizable recruitment and training materials
- Meeting facilitation guides and Discovery Tool user manuals
- Action planning templates
- IRB/ethics protocol and consent document information



## Our Voice Community Meeting #1 - Facilitation Guide

*Suggested time to complete: 60-90 minutes*

### What you need for the meeting

- Space for the meeting
- A sign-in sheet and some extra paper and pens
- A white board or chartpad paper/markers and tape
- Copies of the Discovery Tool data your team collected (printed photos and transcripts)
- Meeting notes template
- [optional] Copies of the Community Advocacy Handbook

Topic	Time	Activities
Intro	5-10min	<ul style="list-style-type: none"><li>• Participants sign in and update contact info</li><li>• Explain meeting purpose</li></ul>
A. Data Review	15-20 min	<ul style="list-style-type: none"><li>• Review the Discovery Tool data (using print-outs, slides, or another format)</li><li>• As a group, identify <b>positive</b> and <b>negative</b> features of the environment<ul style="list-style-type: none"><li>◦ Write these on whiteboard/chartpad paper</li></ul></li></ul>
B. Grouping Data & Prioritizing for Action	10-15 min	<ul style="list-style-type: none"><li>• As a group, divide the data into common themes – write these on whiteboard/chartpad paper</li><li>• Identify theme priorities based on <b>importance</b> and <b>feasibility</b> – highlight or circle the top priorities</li></ul>
C. Brainstorm solutions	10-15 min	<ul style="list-style-type: none"><li>• Discuss potential solutions to priority challenges</li><li>• Brainstorm <b>potential partners</b> and <b>potential opposition</b><ul style="list-style-type: none"><li>◦ Write these on whiteboard/chartpad paper</li></ul></li></ul>
D. Strategies for engagement	10-15 min	<ul style="list-style-type: none"><li>• Brainstorm ways to engage potential partners and deal with potential opposition<ul style="list-style-type: none"><li>◦ Write these on whiteboard/chartpad paper</li></ul></li></ul>
E. Next Steps and Wrap-up	10-15 min	<ul style="list-style-type: none"><li>• Summarize findings and agreements</li><li>• Agree on next steps</li><li>• Plan for next meeting</li><li>• [optional] Distribute "Community Participant Handbook" for future advocacy</li></ul>

Our Voice Toolkit: Community Meeting Facilitation Guide  
© Stanford University, 2017

## Making an Action Plan



**WHAT** is the change that needs to be made?

---

**WHY** is it important for this change to be made? What difference will it make?

---

**WHERE** does this change need to be made to make the greatest impact?

---

**WHEN** does this change need to be made? What is the timeline?

---





***So far:***  
**19 countries**  
**6 continents**

## ***'Our Voice'* Global Citizen Science Research Network for Health Equity, 2018**

(Robert Wood Johnson Foundation planning grant)



# ***Our Voice Global Network***

A global community committed to continuous quality improvement, dissemination, and celebration of successes

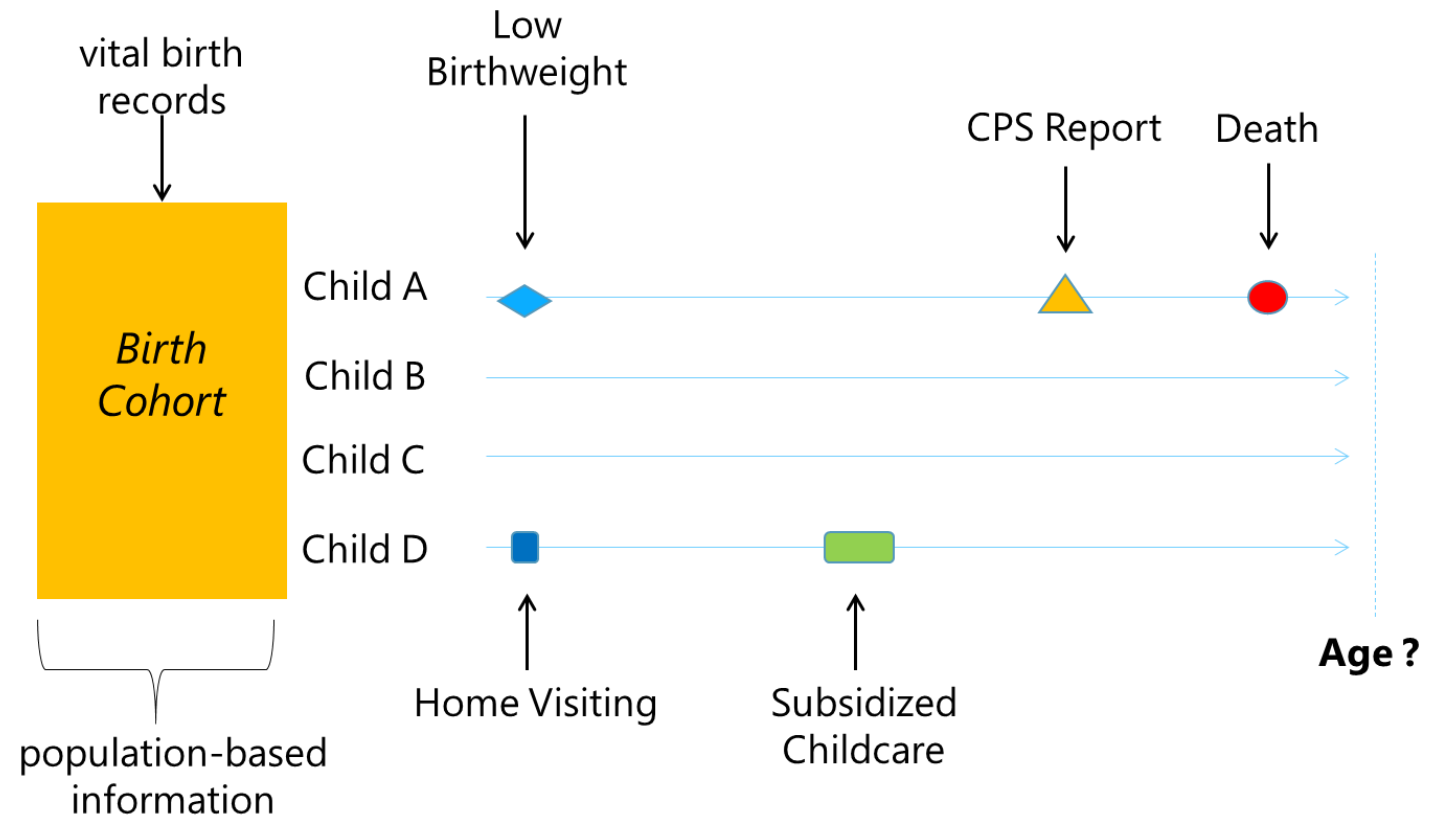




Harnessing the scientific potential of linked, administrative data to inform children's programs and policies.

# records

- 1 birth  
1999-2017
- 2 linkages  
(range of data sources)
- 3 analysis  
cohort, prospective
- 4 dissemination  
evidence-based policy development





# california strong start index

www.strongstartindex.org



About Understanding the Map Strong Start in Action Get Involved What's New

The California Strong Start Index helps us understand the conditions into which babies are born, so we can raise healthy, resilient kids.

By measuring the resources babies have at birth across the state, California can allocate supports and services more equitably—and earlier in children's lives.

Explore Data



OVERLAY BOUNDARIES

None County

Assembly Senate

RESET

ZOOM TO

Los Angeles

None Supervisorial Districts Service Planning Areas

Type in a ZIP code

FILTER BY QUINTILES

All

80-100%

60-79%

Download PDF

FAQ



OVERLAY BOUNDARIES

None County

Assembly Senate

ZOOM TO

Type in a ZIP code

FILTER BY QUINTILES

All

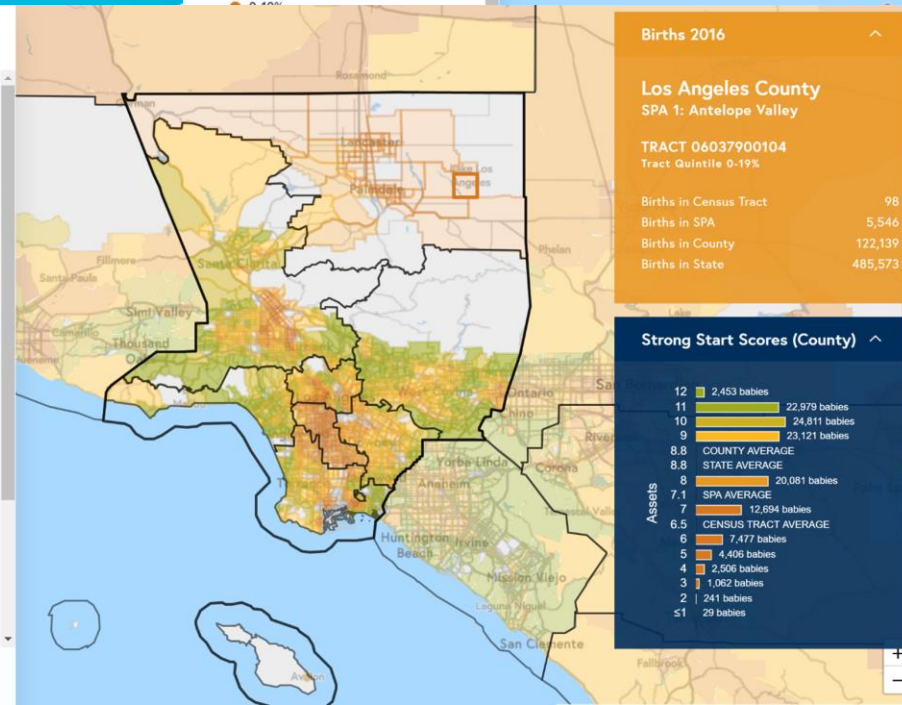
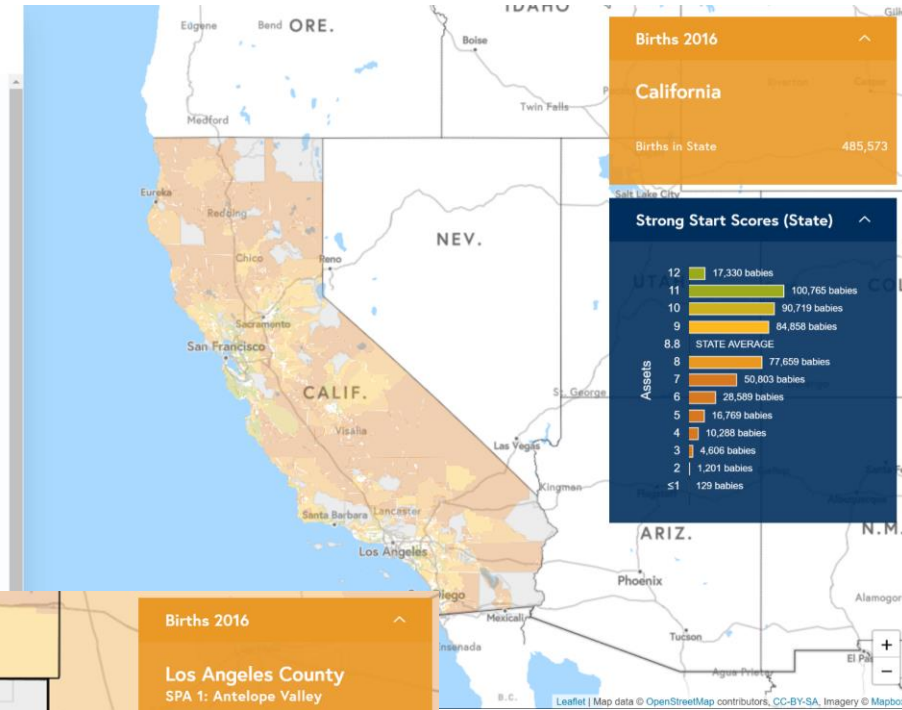
80-100%

60-79%

40-59%

20-39%

0-19%



Children's  
Data Network



thank you

[www.datanetwork.org](http://www.datanetwork.org)

[www.strongstartindex.org](http://www.strongstartindex.org)

[rfoust@usc.edu](mailto:rfoust@usc.edu)