



Sonoma Connect | Sonoma Unidos

Leading Change by Centering Community

Adriana Arrizón, Director

Cynthia King, MSW, MPH, Action Team Chair



CIE Conference
August, 2022

Sonoma Connect | Sonoma Unidos



- 1 Human Centered
- 2 Dismantle systems
- 3 Responsive system and programming

- 4 SDOH and ACEs
- 5 Coordination and alignment of systems
- 6 Measure what needs to be changed

Expanding Focus areas



Support Mental Health and Culturally Responsive Care to work towards *healing our community.*

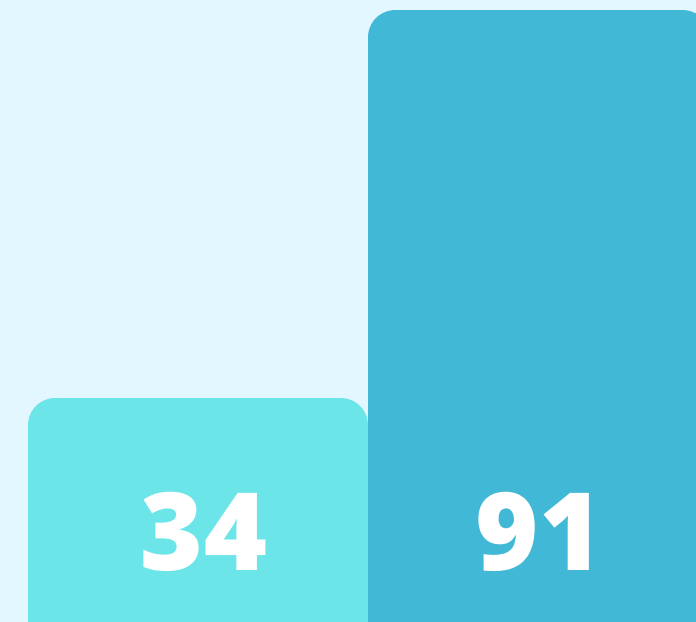
.....

Integration Across Sectors



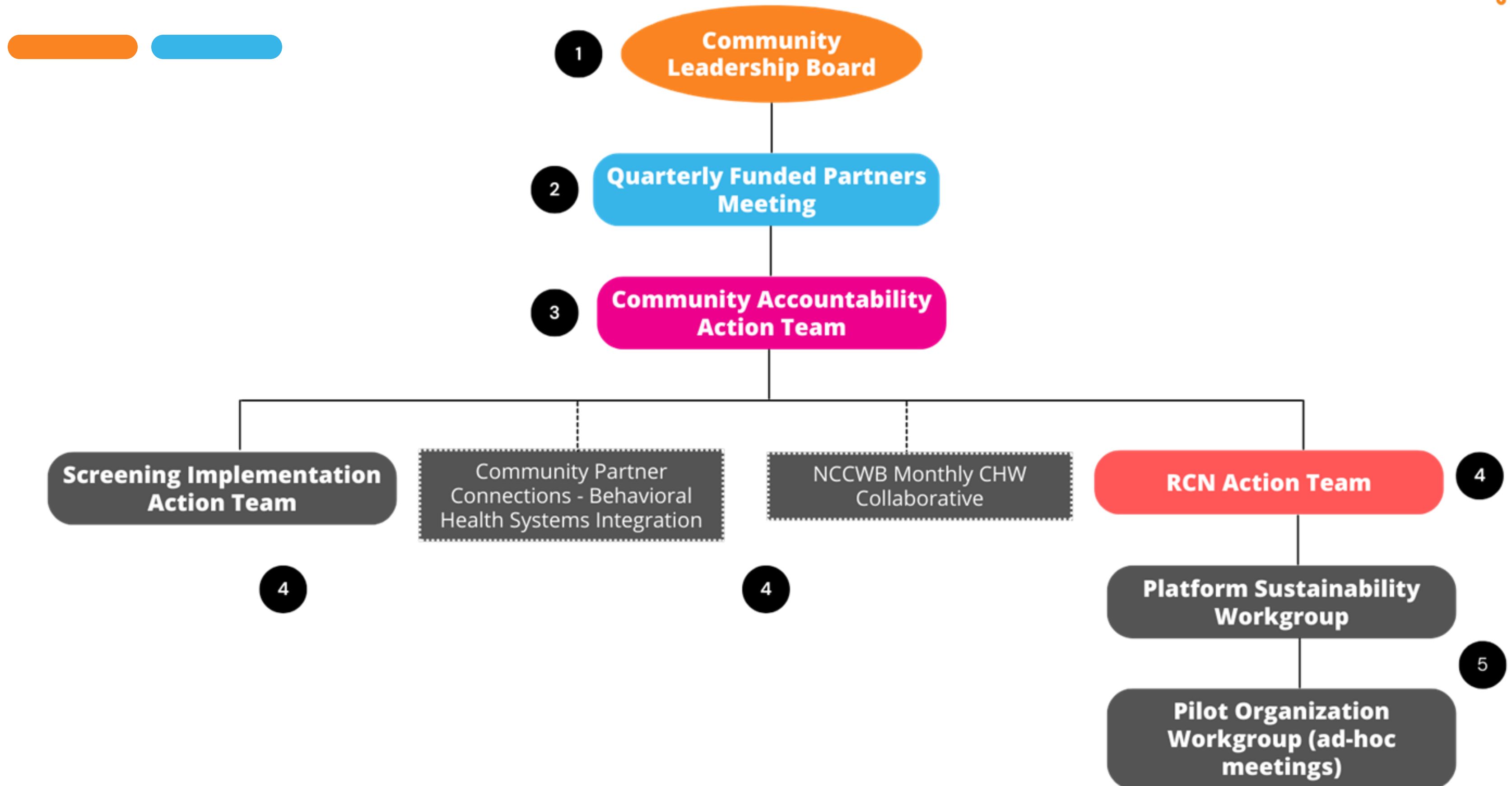
91 organizations represented

- 5 school orgs
- 44 CBOs
- 14 Health Centers
- 6 local and state government orgs
- 22 other orgs & individuals

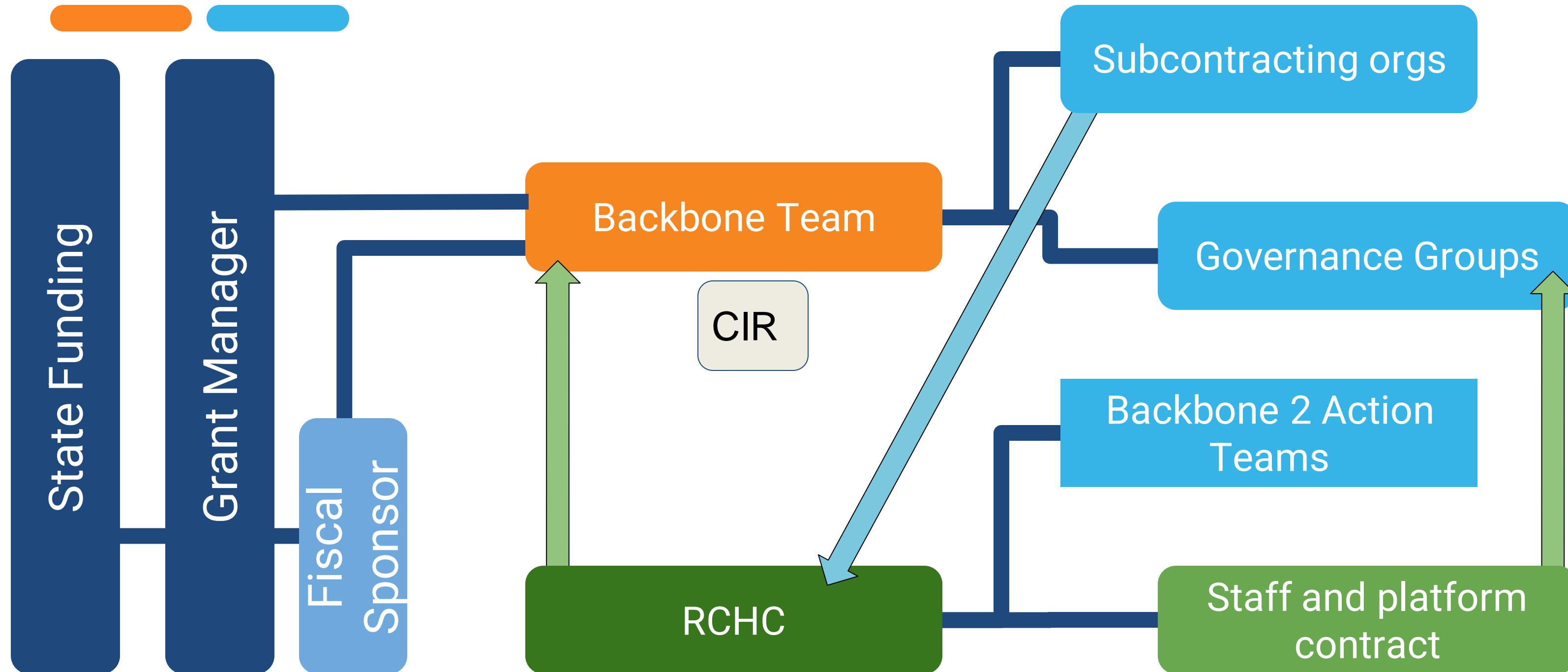


Participating organizations more than **tripled** in one year

Organizational Structure



Dispersed Authority



Trauma informed process



How to support our staff and partners as they are doing trauma informed work



Our Strategies



Clinical Implementation Action Team

Co-chairs:

- Dr. Dierdre Bernard-Pearl, Santa Rosa Community Health
- Jessica Moore, Petaluma Health Center



Community Accountability Action Team (CA-AT)

Co-chairs:

- Lilian Merino, Redwood Community Health Coalition
- Rocio Monter, CAP Sonoma



Resource Connection Network Action Team (RCN)

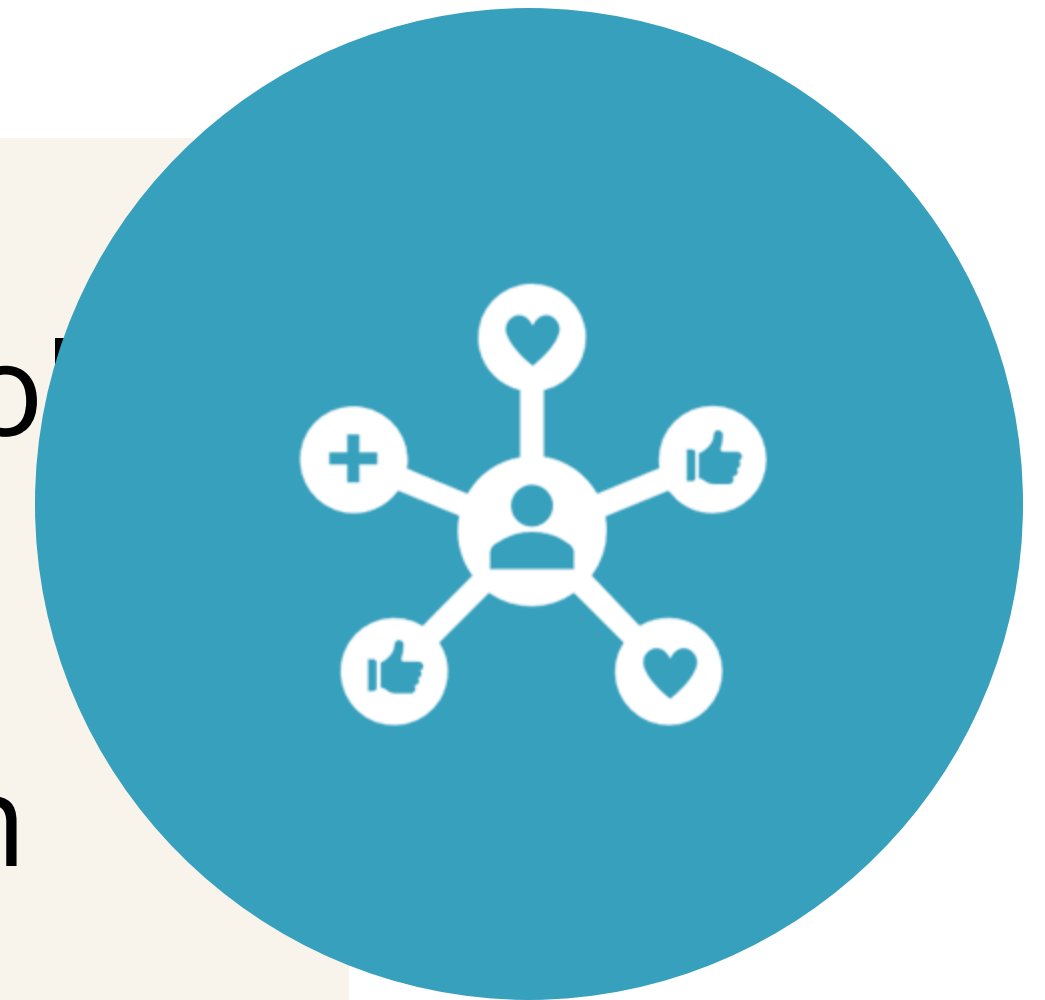
Co-chairs:

- Cynthia King, Frontline Workers Counseling Project
- TBD

RCN Action Team



- Clear position that technology is a tool and only part of a solution
- Medical and social system integration
- Ecosystem to support right level of care delivery
- Facilitated group process



Selection Timeline



Need Identified



Sonoma County's many data systems causes duplicated data entry, and disconnected support to the community.

The RCN Action Team convened **79** participants from **45** different community orgs to define criteria for the tech selection.

RCN Action Team

Request for Proposals

1. RCHC & Intrepid Ascent developed an RFP
2. RCN organized meetings with tech vendors presentations
3. Community stakeholders ranked ranked vendors
4. Results were presented to CAAT and CLB for input

NinePatch Selected!



Implementation of Platform



Community Accountability Action Team



- Healing-centered community engagement
- Center community voice
- Leadership for BIPOC communities
- Organizational & workforce capacity development



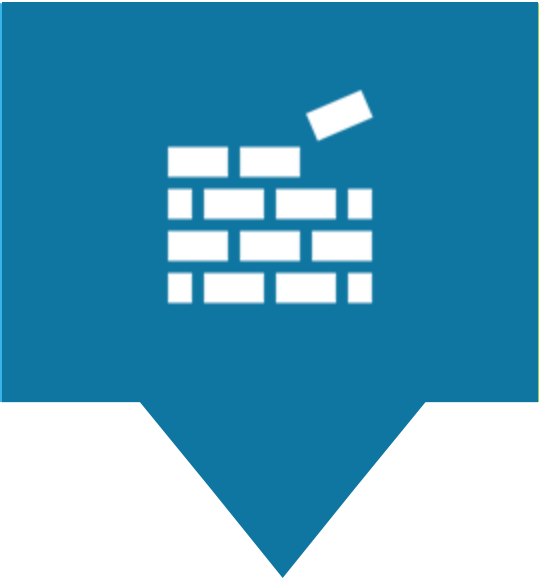
Authentic Engagement and Community Decision Making



DEIB training



Strategic Planning



Co-creation



Accountability
Paying for time

Dismantling systems

Let's Connect



Adriana Arrizón

Director, Sonoma Connect | Sonoma Unidos

aarrizon@sonomaconnect.org



Cynthia King

Action Team Chair

Executive Director, Frontline Workers Counseling Project

cynthia.king@fwcp.org



As you are aware, in California we are uniquely positioned to convene and align community-led data-sharing efforts in anticipation of funding that is slated

to release this fall. On August 25-26, 2022, the

[CIE California Forum](#) will bring together stakeholders across the state to (1) discuss and align our vision and goals for cross-sector data sharing systems; (2) explore how to leverage the CIE model for systems change; and (3) identify opportunities for future collaboration around state funding to support community health.

We immediately thought of having you/your team speak during the Learning Sessions on the first day.

The Learning Sessions are designed to share different community perspectives with respect to enabling cross-sector data sharing infrastructure.

Specifically, we would like for you to present your experience leveraging ACES funding to support the development of Sonoma Connect/Sonoma Unidos. Of course, we are open to your thoughts on presentation content and scope.

If you are interested, we would love to set up a short call to discuss the meeting in more detail.

Breakout Room



- Discussion of authentic and effective community leadership and engagement
- How to manage the funder relationship in a way that allows for flexibility and adjusted timelines when needed
- The importance of selecting the representative leaders with a systems orientation and existing relationship
- Shared values and definitions
- Facilitating engagement with reasonable expectations of participants
- Creating an RFP and selection process for technology that is inclusive and accessible
- The importance of the backbone team