



Community
Information
Exchange®

CIE® San Diego Membership Overview

What is the CIE?

A CIE is a community-led ecosystem comprised of multidisciplinary network partners who use a shared language, resource database, and integrated technology platforms to deliver enhanced community care planning. A CIE enables communities to shift from a reactive approach to addressing social needs, to an approach that is more proactive, holistic and person-centered. At the very core of a CIE is the community it serves, and with the community as its compass, a CIE seeks to support antiracism and health equity.

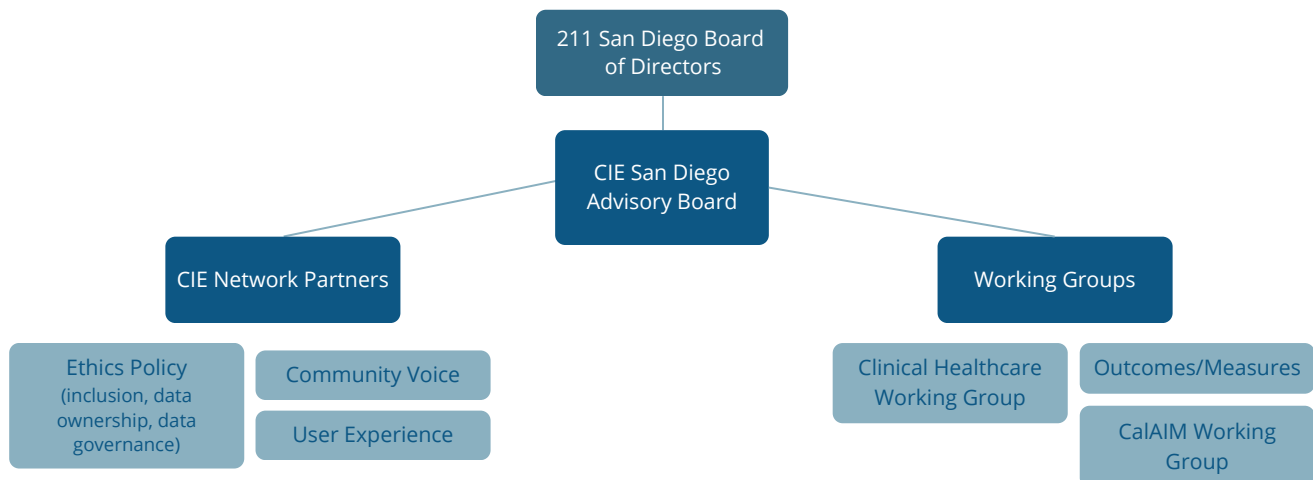


Current CIE Network Partners
ciesandiego.org/partners

CIE San Diego Membership Includes

Local governance/stewardship to ensure care coordination among the San Diego community

- **CIE Advisory Board:** A council that embodies cross-sector representation, reflecting the diverse client population and community needs. Members are recruited to support the strategic vision and the needs of the community.
- **Monthly Partner Meetings:** An avenue to form connections with representatives from across the network of partners, learn the latest news about CIE utilization, impact, and growth. Participants stay in the know about multi-sector initiatives, share best practices and feedback that will shape how CIE evolves to meet the needs of network partners and community members.
- **Workgroups:** A variety of subcommittee opportunities that focus on aligning network policies, practices and initiatives that impact our health and social community providers.

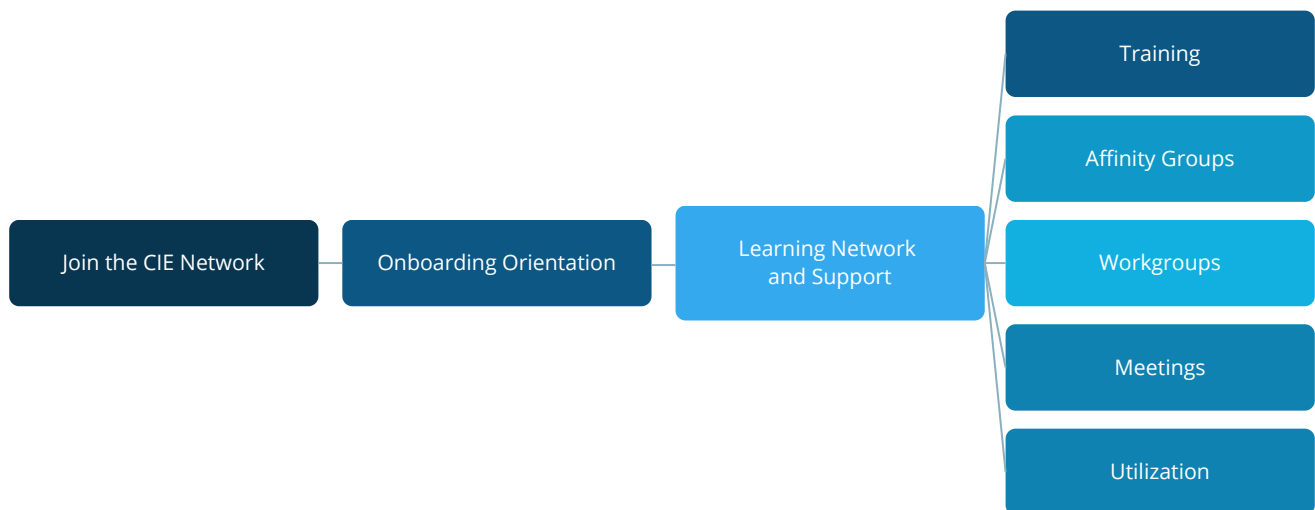


Access to online CIE San Diego portal and data integration support

- Set number of Salesforce Log ins for each member organizations direct service staff.
- Longitudinal person record inclusive of data from healthcare and social service agencies
- Bi-directional referral capability, enabling closed-loop outcomes for resources and tracked program enrollments.
- User feedback mechanisms including surveys, user experience listening sessions, and focus groups
- Provider role-based permissions and licensed access to the CIE San Diego Portal, including access to person-centered records and a suite of care coordination tools

Learning Network & Partnership opportunities

- Tailored onboarding, implementation and integration support that includes consultation, demos, and training;
- Toolkit for planning and implementation;
- Option to form an affinity group with other network partner organizations to support multi-agency care coordination between community-based organizations, health centers, hospitals, healthcare providers and health plans;
- Eligibility to join existing collective impact initiatives;
- Priority consideration for joint grant applications;
- Newsletter subscription to stay in the know of timely network updates, impact, and opportunities.
- Reduced costs for special events such as the annual CIE Summit.



Robust CIE data analytics

- Subscription access to the CIE San Diego Community Dashboard via Tableau Online; inform program planning, reporting or grant opportunities by reviewing population level socio economic and SDoH vulnerability factors of all CIE participants.
- Specialized reports detailing your organization system interactions, including, but not limited to:
 - 1) Client/patient demographics & updated contact information;
 - 2) Top Referral Organization;
 - 3) Client/patient outcomes and access to services;
 - 4) Social determinants of health needs and information.
- Specialized Reports of CIE San Diego portal utilization

Type of Legal Entity	Payment Structure	Pricing	Tier Levels	Variables impacting price point; Data Source
HEALTH PLANS	Annual Membership plus PMPM	\$30,000/yr; \$1 per member per month	Not applicable	PMPM report from CIE®
HOSPITALS	Annual Membership	Tier 1-\$30,000 Tier 2-\$50,000 Tier 3-\$100,000	Tier 1: <1% discharge Tier 2: 2-7% discharge Tier 3: >8% discharge	Tier placement is based on # of facilities and on annual discharge #s per California Department of Health Care Access and Information
INDEPENDENT PHYSICIAN OFFICES	Annual Membership	Tier 1-\$5,000 Tier 2-\$10,000 Tier 3-\$15,000	Tier 1: <5k patients Tier 2: <10k patients Tier 3: >10k patients	Tier placement is based on annual # of patients per reported by IPA
Federally Qualified Health Centers (FQHCs)	In-kind payment via CIE utilization - No direct charge On-boarding, membership, integration costs sponsored by government/philanthropy	Tier 1-\$9,000 Tier 2-\$15,000 Tier 3-\$30,000	Tier 1: <10k patients Tier 2: <65k patients Tier 3: >65k patients	Tier level placement is based on annual numbers of patients provided by Health Resources and Service Administration Uniform Standard Data (HRSA UDS)
NONPROFIT SERVICE PROVIDERS - Community-Based Organizations	In-kind payment via CIE utilization - No direct charge On-boarding, membership, integration costs sponsored by government/philanthropy	Tier 1-\$2,500 Tier 2-\$5,000 Tier 3-\$20,000	Tier 1: <\$3M budget Tier 2: \$3-\$10M Tier 3: >\$10M	Tier placement is based on annual operating budget; 990
FOR PROFIT SERVICE PROVIDERS - Community-Based Organizations	Annual Membership	Tier 1-\$10,000 Tier 2-\$15,000 Tier 3-\$25,000	Tier 1: <\$3M budget Tier 2: \$3-\$10M Tier 3: >\$10M	Tier placement is based on annual operating budget designated to CIE population
GOVERNMENT	Annual Membership	Tier 1-\$10,000 Tier 2-\$20,000 Tier 3-\$30,000; \$1 per consented customer/constituent per month	Tier 1: <10k residents Tier 2: <1M residents Tier 3: >1M residents	Tier placement is based on jurisdiction size, San Diego County Fact Sheet

*pricing is subject to change based on partnership