



Community  
Information  
Exchange®

# CIE® San Diego Membership Overview

## What is the CIE?

A CIE is a community-led ecosystem comprised of multidisciplinary network partners who use a shared language, resource database, and integrated technology platforms to deliver enhanced community care planning. A CIE enables communities to shift from a reactive approach to addressing social needs, to an approach that is more proactive, holistic and person-centered. At the very core of a CIE is the community it serves, and with the community as its compass, a CIE seeks to support antiracism and health equity.

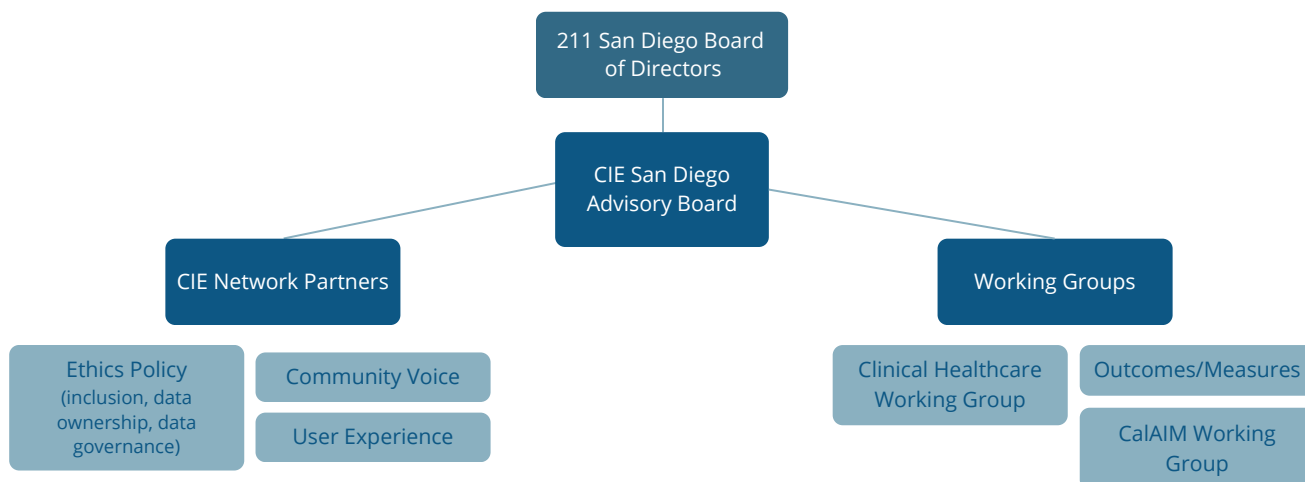


Current CIE Network Partners  
[ciesandiego.org/partners](https://ciesandiego.org/partners)

# CIE San Diego Membership Includes

## Local governance/stewardship to ensure care coordination among the San Diego community

- **CIE Advisory Board:** A council that embodies cross-sector representation, reflecting the diverse client population and community needs. Members are recruited to support the strategic vision and the needs of the community.
- **Monthly Partner Meetings:** An avenue to form connections with representatives from across the network of partners, learn the latest news about CIE utilization, impact, and growth. Participants stay in the know about multi-sector initiatives, share best practices and feedback that will shape how CIE evolves to meet the needs of network partners and community members.
- **Workgroups:** A variety of subcommittee opportunities that focus on aligning network policies, practices and initiatives that impact our health and social community providers.

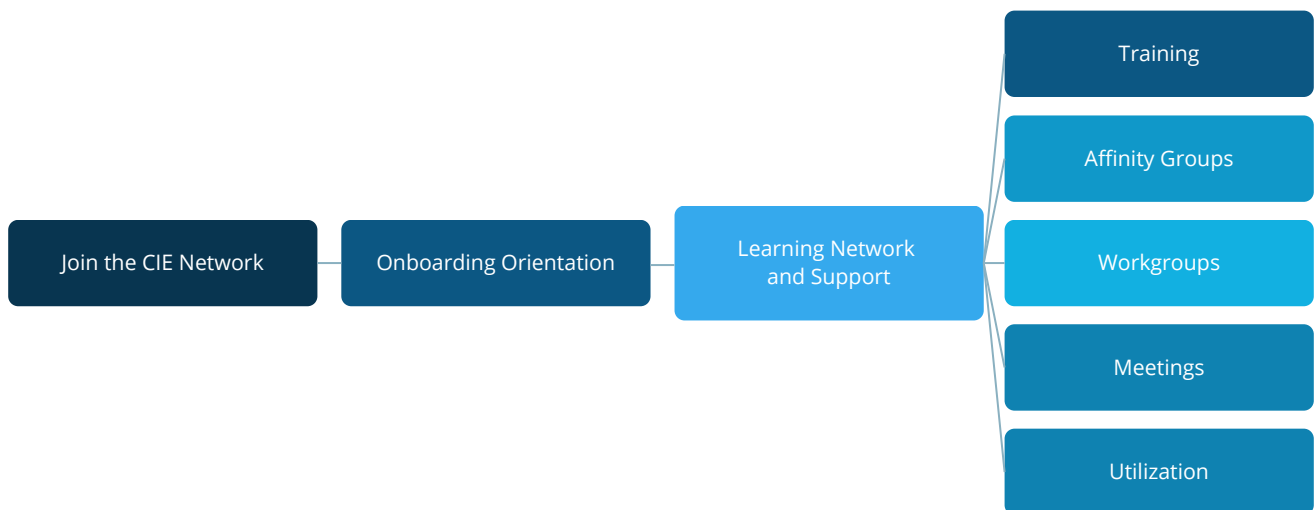


## Access to online CIE San Diego portal and data integration support

- Set number of Salesforce Log ins for each member organizations direct service staff.
- Longitudinal person record inclusive of data from healthcare and social service agencies
- Bi-directional referral capability, enabling closed-loop outcomes for resources and tracked program enrollments.
- User feedback mechanisms including surveys, user experience listening sessions, and focus groups
- Provider role-based permissions and licensed access to the CIE San Diego Portal, including access to person-centered records and a suite of care coordination tools

## Learning Network & Partnership opportunities

- Tailored onboarding, implementation and integration support that includes consultation, demos, and training;
- Toolkit for planning and implementation;
- Option to form an affinity group with other network partner organizations to support multi-agency care coordination between community-based organizations, health centers, hospitals, healthcare providers and health plans;
- Eligibility to join existing collective impact initiatives;
- Priority consideration for joint grant applications;
- Newsletter subscription to stay in the know of timely network updates, impact, and opportunities.
- Reduced costs for special events such as the annual CIE Summit.



## Robust CIE data analytics

- Subscription access to the CIE San Diego Community Dashboard via Tableau Online; inform program planning, reporting or grant opportunities by reviewing population level socio economic and SDoH vulnerability factors of all CIE participants.
- Specialized reports detailing your organization system interactions, including, but not limited to:
  - 1) Client/patient demographics & updated contact information;
  - 2) Top Referral Organization;
  - 3) Client/patient outcomes and access to services;
  - 4) Social determinants of health needs and information.
- Specialized Reports of CIE San Diego portal utilization